

# Consider the Cell; Forget Not the Host Component, While Promoting Health Care, to Safeguard Life

*Sample Project proposal for the globe.*

*3.5 years program, by tripod scheme*

**Dr. Elizabeth JeyaVardhini Samuel**

MBBS MD [General Medicine]  
Assistant Professor, Department of General Medicine  
Karpagam Faculty of Medical Sciences and Research

## I. INTRODUCTION

Past few decades have witnessed, increased incidence of diseases for e.g. Diabetes mellitus, systemic hypertension, acute coronary syndrome, as part of metabolic syndrome; i.e. “cell metabolism is deranged due to unknown factors”. This project is planned to prevent, revert the elucidated “unknown factors” as highlighted in the published e book-“Destroyer of life on earth...” [reference: <http://www.ijsrp.org/monograph/destroyer-of-Life-on-Earth-Ecology-Economy-read.html>] by *grass root level infrastructure*.

### **Purpose**

Cell metabolism is deranged, hence the factors involved in normal cell metabolism, which have defaulted due to acquired pathology need to be reconciled with, to prevent increasing incidence of whole host of “degenerative diseases, auto immune diseases, neoplastic diseases, infectious diseases” in the era of unaware, wantonly embraced contraception, abortion, without therapeutic indication, not implemented as therapeutic protocol but as guillotine protocol?!

## **Literature Review**

Germ cells union resulting in one cell embryo goes through a process of differentiation, controlled multiplication, to become 3 kg baby under the surveillance of 4200pg estrogen, [secreted by fetal placenta, from cholesterol, synthesized from essential fatty acids consumed by the mother in her diet] otherwise fetus will undergo spontaneous abortion by 3<sup>rd</sup> month-called as placental switch over insufficiency.

Every cell within 48 hours, goes through differentiation, controlled multiplication, degeneration, programmed cell death (apoptosis) and new cell formation, which is called cell metabolism, cell cycle, cells life, under the surveillance of androgen, estrogen, derived from cholesterol, hence they are called steroid hormones; *so it means every 48 hours new kidney, new bone, new brain tissue...[every cell, tissue made a new every 48 hours] is rejuvenated by cell metabolism, cell's life cycle which is God ordained in the physiology.*

## Endogenous estrogen, androgen surveillance

### Cell cycle/metabolism

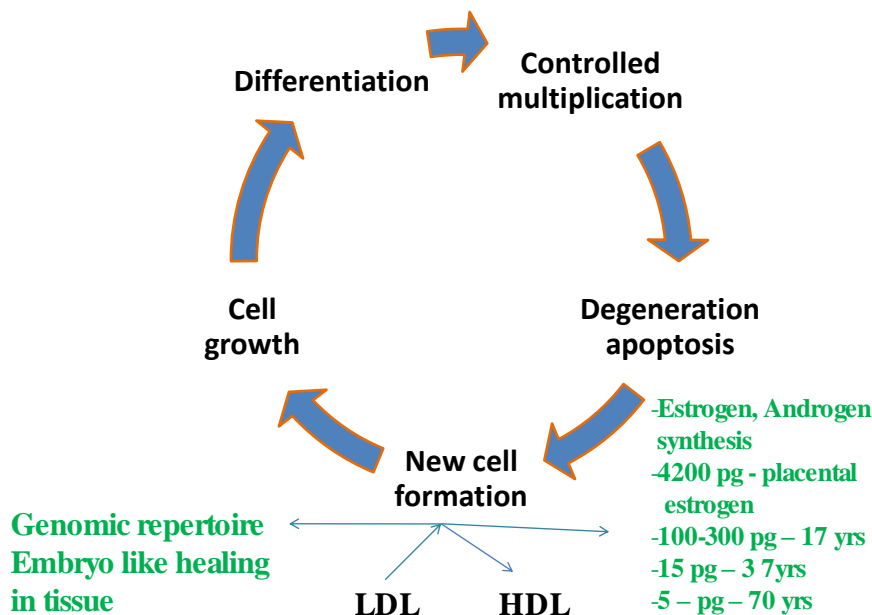


Figure - 1

## Reduced Endogenous estrogen, androgen Contraception, Abortion - Deranged Cell cycle/metabolism

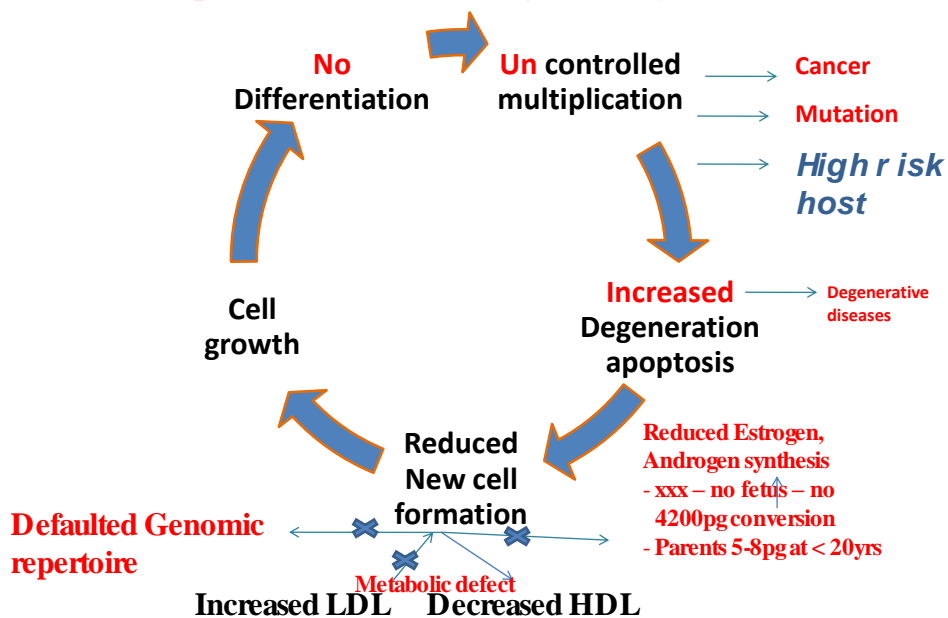


Figure - 2

When the androgen estrogen cannot be synthesized due to *essential fatty acids deprived diet*, decreased synthesis of cholesterol in the body, thereby decreased, cholesterol derived steroid hormone synthesis, the cells apoptosis [God ordained programmed cell death, to prevent cells no differentiation, followed by uncontrolled multiplication leading to neoplasm formation] will continue but new cell formation will lag behind, proportionate to the reduced cholesterol, androgen, estrogen

synthesis, cell membrane synthesis, *resulting in 60% increase in degenerative diseases of every cell, tissue, for e.g. behavioral disorders, divorces, diabetes mellitus, systemic hypertension, acute coronary syndrome neoplasm,...*

Every cell membrane, functioning remarkably, is synthesized from cholesterol and cell cycle governing androgen, estrogen is also synthesized from cholesterol; so cholesterol is basic cell's life moiety.

Cholesterol is synthesized by the body from consumed essential fatty acids and is transported by Low density lipo proteins-LDL, Intermediate density lipo proteins-IDL; LDL donates cholesteryl esters for new cell membrane synthesis, steroid hormone synthesis, bile acid synthesis and becomes HDL-high density lipo protein; when the cell membrane dies, cholesterol gets adsorbed on to HDL by LCAT-lecithin cholesteryl acyl transferase and becomes LDL again; this is a constant ongoing normal metabolic process

**Essential fatty acids comprise mainly virgin oil with its fat content, since oil is derived from nuts and seeds containing seedling and life factors to support the growth of the baby plant;** hence oil fat contains life, growth associated fatty acids; nuts and seeds containing preparations like vadai, Bengal gram, green gram gravies, ground nut, cashew nut cookies....; one egg per day fried preparation which has life factors to support the growth of the chicken.

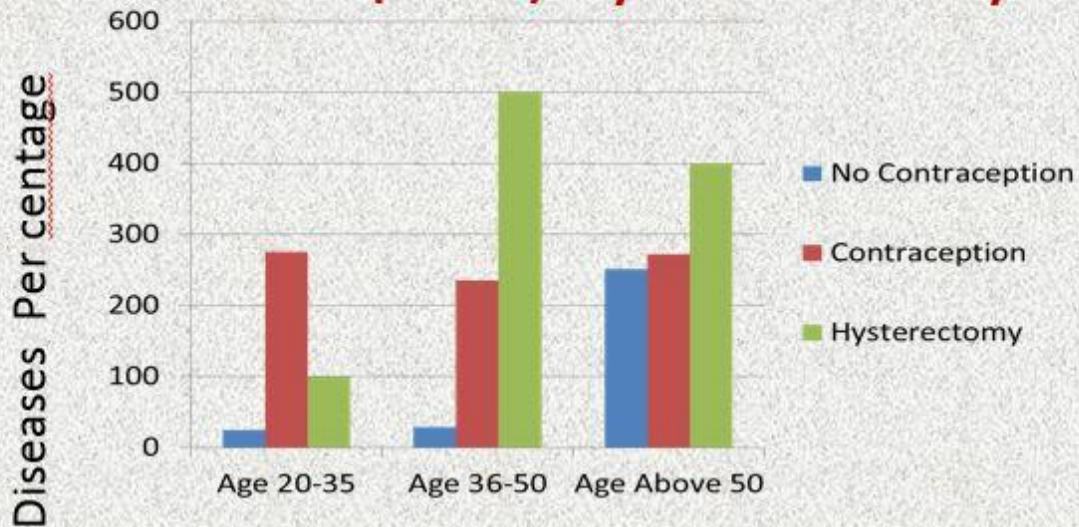
**Triglycerides derived from animal fat is harmful,** leading to - **6 fold increase in coronary artery disease, stroke;** hence meat without fat, blood needs to be consumed; **whereas water living without scales, gills e.g. crabs, sword fish, jelly fish should not to be consumed,** because they have toxin [akin to snakes, scorpions] in the flesh, which **by molecular mimicry mediated auto immunity, results in destruction of nephrons, neurons, blood vessels, blood cells i.e. colitis, nephritis, cerebro vasculitis-micro angiopathic, macro arteritis, venulitis, angioneurotic edema, Crohns disease, ulcerative colitis, liver, pancreatic, gastro intestinal tract malignancies, [as its ingested-entry by mouth], pancytopenia, auto immune thrombocytopenia, hemolysis, thyroiditis, transverse myelitis, acute poly radiculopathy.....**similarly some legumes meant to be consumed by horses, mushrooms meant for cattle, yams with

urticarial instigation, can produce, similar auto immune diseases by consumption, contact.

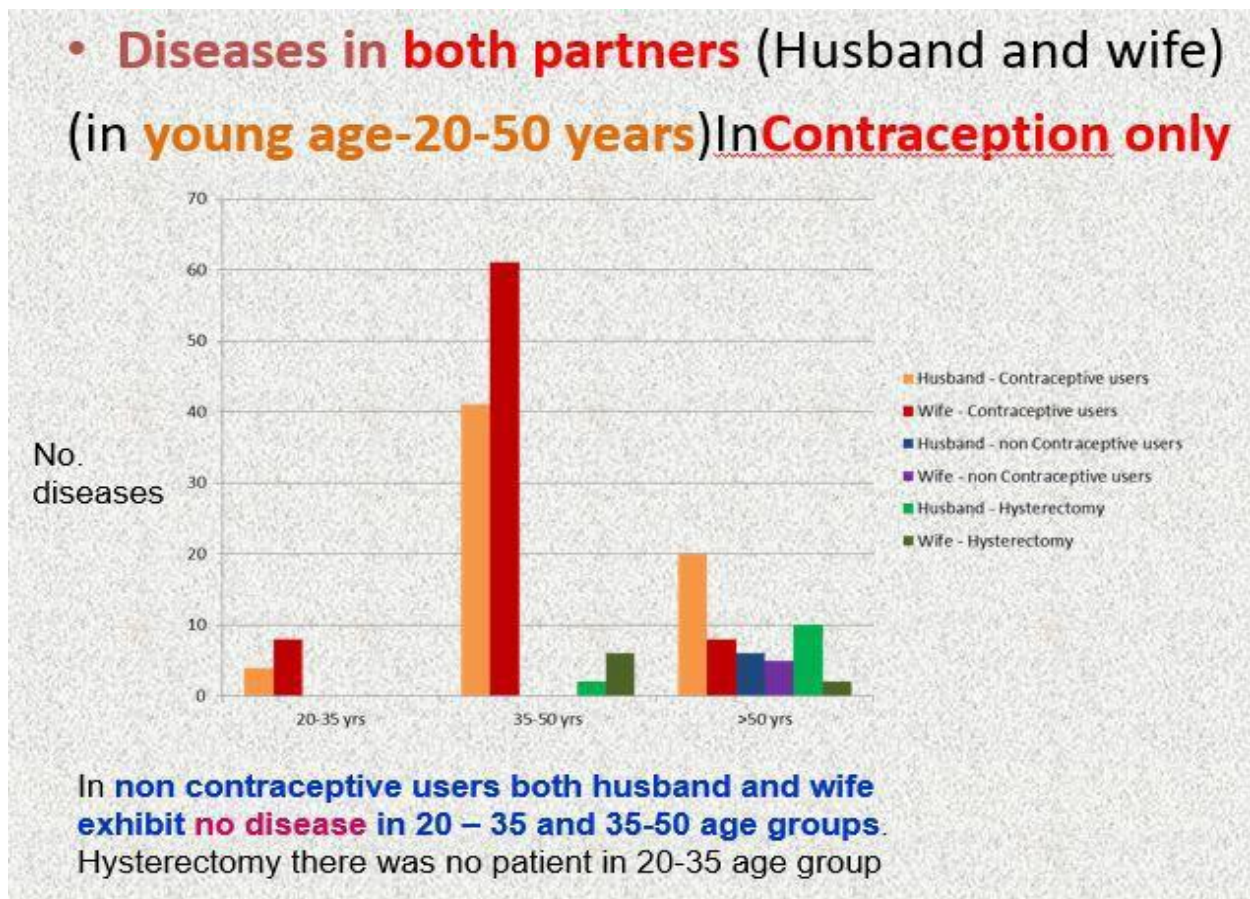
Cholesterol is the basic moiety of cell and cell cycle governing steroid hormone; **hence virgin oil, nuts and seeds preparations result in robust health of cells, life, metabolism; whereas obnoxious triglycerides consumption is detrimental to the tissue leading to molecular mimicry mediated auto immune destruction; auto immune diseases naturally are combated by steroids prepared from cholesterol, but present era of sun flower[ has 6 fold decreased HDL, LDL than ground nut seed], refined oil, fatty acids deprived diet, natural synthesis of cholesterol from fatty acids and thereby steroid hormone synthesis being at stake, the obnoxious triglycerides ingestion associated auto immune diseases are seen in a pronounced manner.**

**Hence essential fatty acids deprived diet** i.e. refined oil, sunflower oil [with 6 times less HDL, LDL than ground nut seed] can lead to **60% increase in degenerative diseases** like diabetes mellitus, systemic hypertension, behavioral disorders, dementia, psychosis, increased divorces [ brain tissue degenerates including frontal lobe,(the difference between animals and humans) so animal like behavior i.e. I'll damage someone but not realize its wrong, just as lion will kill but called as King of Forest neoplasm like fibro adenoma breast, myoma uterus, ovarian cysts, a small percentage of uterine cancers, poly cystic ovarian disease...[because the cell goes for uncontrolled multiplication, preceded by no differentiation, to form tumors due to decreased surveillance of androgen, estrogen; when the estrogen is reduced by fatty acids deprived diet, reduced mid cycle estrogen surge-leading to reduced ovulation, poly cystic ovarian disease]

## Diseases/morbidity- contraception/hysterectomy.



***Tubal Recanalization – mandatory/essential - will return life factors – result in decreased diseases.*** Hysterectomy should be reserved only for PPH/Uterine Cancers. Hysterectomy to be replaced by tubal-recanalization, myomectomy, Pelvic Floor Repair.



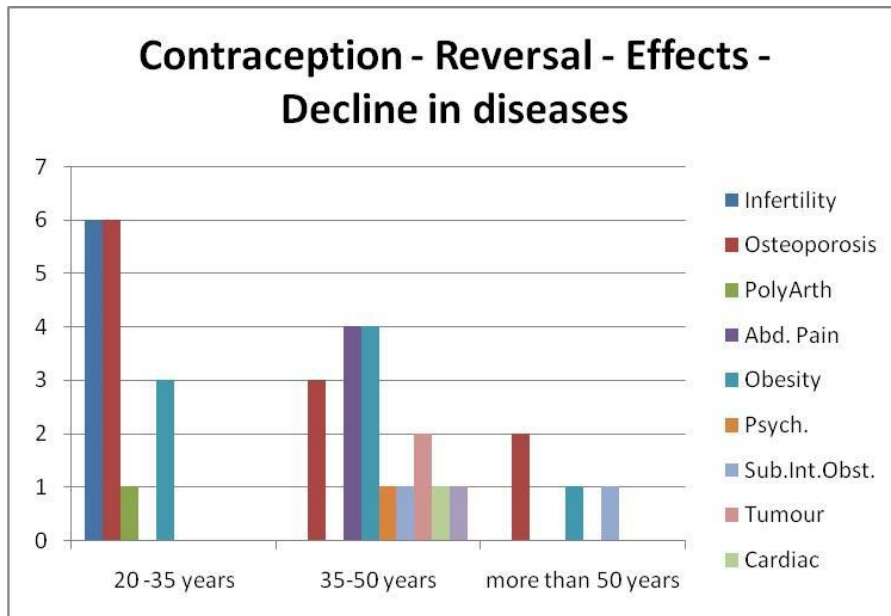
**Contraception, abortion** on the other hand- {an acquired measure aimed to control the birth of people [population], [to achieve eradication of human race which it has achieved successfully]} which got implemented without therapeutic indication, therapeutic protocol, results in **275% increase in diseases, 5 fold increase in mortality among 20-50 years age group, secondary to contraception as follows:**

- smashed fragmentation of 20 million germ cells, on the barricades of contraception within fraction of seconds [which otherwise would have liquefied in minutes normally] resulting in ring chromosomes, a centric fragments, chromatid breaks, with associated reduced androgen, estrogen to 1.4ng, 5pg respectively resulting in **degenerative diseases**
- fragmented chromatids are recognized as foreign and **autoimmunity** develops to the loci of chromosomes present in the fragmented chromatids resulting in multisystem destruction
- agonizingly reduced estrogen, androgen surveillance results in cells transforming unchecked **to neoplasm** by

uncontrolled multiplication, preceded by no differentiation

- cells genomic repertoire[embryo like healing capacity]reflecting cells robust healthy metabolism is reduced in the cells, secondary to reduced estrogen androgen status, associated with acquired contraception, abortion, with **resultant increase in infectious diseases.[withered tree concept host]** and **alarmingly high emergence, virulence, drug resistance of microbes favored by aborted environmental blood pollution, contraceptive menstrual blood pollution.**

**Contraception reversal including tubal recanalization, results in halt of germ cells destruction, restoring androgen, estrogen back to 79.9% of age normal, leading to restoration of normal cell cycle, metabolism, decline in diseases in both parents**



**Hysterectomy, orchidectomy** are associated *with 500% increase in degenerative diseases and neoplastic diseases, since the hormones drop to < 0.4pg*, cell metabolism, cell cycle, cell's genomic repertoire gets deranged, default, because cell metabolism, cycle, genomic repertoire are dependent upon estrogen, androgen surveillance, whose synthesis, has drastically reduced, secondary to hysterectomy, orchidectomy.

Hence hysterectomy, be reserved only for cancer uteri, post partum hemorrhage. Myoma come secondary to decreased estrogen surveillance either secondary to essential fatty acids deprived diet, resulting in decreased synthesis of endogenous estrogen, or secondary to contraception, abortion, the endogenous estrogen is agonizingly reduced, <5pg/ml, being associated with smashed fragmentation of germ cells; myoma will never become malignant.

*Hence Myomectomy coupled with counseling for essential fatty acids rich diet to prevent recurrence, can be planned instead of hysterectomy*, as in nulliparous uterus, by increased synthesis of estrogen, by enhancing cholesterol synthesis from essential fatty acids containing diet.

*By reversal of contraception, [tubal recanalization] coupled with Myomectomy, menorrhagia can be treated instead of hysterectomy* i.e. the reduced estrogen status, rejuvenates secondary to halt of germ cells destruction by reversing contraception, and the estrogen, synthesis increases to 80% of age normal [withered tree blooms again] and further recurrence of myoma, or occurrence of cancer uteri are prevented, by restoring cell cycle governing estrogen, androgen.

Similarly *tubal recanalization, coupled with pelvic floor repair/ sling procedure as in nulliparous prolapse, can replace vaginal hysterectomy*, with restoration of estrogen, cell's genomic repertoire, the pelvic floor muscles are restored with full fiber tensile strength

*Reversal of contraception, halt of abortions will restore deranged cell metabolism, by restoration of hormones, halt of germ cells destruction and not Yoga- which will only further increase wear and tear and not the answer for the increase in metabolic syndrome similarly orchidectomy be reserved for cancer testes only*; its physiological decrease, in androgen leads to in equal peri-urethral growth of prostate growth in a non contracepted person leading to benign prostate pathology; in acquired contraception, abortion, endogenous androgen gets agonizingly reduced to <1.3ng with resultant 275% increased diseases, including Benign prostate pathology, with increased malignant transformation and *pathologically acquired orchidectomy to treat prostate neoplasm, in contracepted person, will result in 500% increase in degenerative diseases, neoplastic diseases.*

Two subsets of people are obvious-the one group without contraception, abortion, with intact, normally functioning cell metabolism, cell cycle, genomic repertoire [embryo like healing capacity] with normal endogenous estrogen, androgen.

The other subset of people with acquired contraception, abortion, disrupting normal cell metabolism, cell cycle, genomic repertoire, secondary to acquired germ cell destruction, agonizingly reduced endogenous estrogen, androgen-akin to withered tree host component experiencing 275% increased degenerative, neoplastic, auto immune, infectious diseases.

*Tight pelvic attires lead to thermogenic destruction of germ cells* with loss of viability, further the germ cells in an attempt to withstand the heat go through metaplasia, dysplasia, anaplasia, and malignancies.

Maximum cells healing capacity is 1mm/ day; hence starting from the day of **menstruation**, though the flow by endometrial shedding will be for 3 days it will take another 3 days for the raw endometrial surface to heal, demanding **7 days**

**abstinence**, otherwise the germ cells being exposed to raw endometrial surface can lead on to autoimmune diseases, during contact the patchy endometrial tissue can be sucked in producing endometriosis, adenomyosis. Similarly **girl child [xx] birth**, with bigger placenta, increases the life of parents by >20 years by the placental estrogen produced->4200pg/ml, [ circulating in mother's blood, goodness passed on to the father by endorphins, the parental kidneys enlarge during pregnancy, bones become strengthened during pregnancy, by circulating endogenous placental estrogen levels, protects from increased thrombogenicity i.e. myocardial infarction, stroke, deep venous thrombosis, pulmonary embolism, increases robust health in cell cycle, metabolism... ]. So when the placenta detaches during delivery, the flow/lochia will be for ~45 days another 45 days for the detached raw placental surface to heal, hence **abstinence needs to be observed for 90 days**; whereas **male child [x y] birth** is associated with smaller placenta, 22 days lochia will be there, another 22 days will take for the raw detached placental surface to heal, hence **abstinence is required for 45 days** only, otherwise autoimmune diseases, adenomyosis uteri can occur.

In **couples observing contraception**, the 20 million germ cells are smashed to fragments, and if abstinence is not observed, the **millions of fragmented germ cells will be exposed to the raw endometrial surface**, enormous injured cells getting exposed to the raw endometrial surface can result in **disseminated intravascular coagulation and sudden demise** is also possible.

**Contraception abortion has resulted in disruption of self sustaining ecology, self sustaining economy**, as follows:

In 1994 Dr. Susan Joplin of Brunel University in an attempt to explain the reason for disappearance of fish, wanting to identify the pollutant let out in the rivers, with a postulate of industrial waste, planned a study of 4 major rivers of Australia, U.K., USA; to their surprise the **pollutant identified by the study was not industrial waste, but estrogen**.

Similarly in 1997 Professor Paul Devroy of Germany, in an attempt to find out the pollutant of the air, which could explain the increase in infertility, again postulating it has to be industrial emissions, detected to their surprise, it was not industrial emissions, but **particles like estrogen are in the rise in the air**; but how and why estrogen are on the rise was not clear; in the following calculation an attempt is made to explain the same

When a mother is blessed with for e.g.10 children, she will not menstruate for 200 months minimum; now with one child policy, small family norms, a woman of reproductive age group is made to menstruate for 20 years more ~1989 million women of reproductive age group are made to menstruate each for 200 months more.

So **1989 million women×200 months× 300pg/ml menstrual blood×350ml of blood loss/ menstrual cycle= estrogen pollutant to the environment**

863 million reported surgical abortions from 1922-2010, 37.5 million reported surgical abortions/year, 498 abortions /minute on the globe; hence

**498 abortions/minute×60 minutes×24hours×365days×80years×350ml.blood /abortion×4200pg/ml of estrogen in the aborted blood=estrogen pollutant to the air, water**

Aborted blood polluted, contraceptive menstrual blood polluted air inhalation, water ingestion, results in

a) Increase in chronic obstructive lung diseases, lung cancers in never smokers;

b) Emergence, virulence, drug resistance of microbes e.g. SARS virus, H1N1 virus, HIV, since blood is a good media for growth of microbes

c) in this God ordained Universe, live humans with their mandatory emissions, being food for plants, replace molecule by molecule oxygen, hence any number of lives can this earth support, without oxygen getting depleted; acquired contraception, abortion, **aborted blood, contraceptive menstrual blood pollution, depleted oxygen cannot be replaced by plants**, unlike live humans with their emissions, because **Author of Life, Universe's calculations exist to support Life on earth and not destruction of lives** sequel.

d)hence ozone-oxygen envelope is depleted by aborted blood pollution, contraceptive menstrual blood pollution, leading to global warming, hot air currents setting up resulting in **increasing tornadoes, cyclones, earthquakes, tsunamis, disappearance of islands[earth quakes coupled with tsunami,]. When the blood pollution depletes oxygen of waters the fish are washed ashore dead**; by global warming, irreparable repair of DNA occurs in all lives, **disappearance of birds** follow.

The blood fond **animals like tigers are visiting foot hill townships** more frequently along the river coasts, attracted by the **aborted blood pollution of the waters**.

**Elephants, bears** due to blood pollution depleting oxygen of the air, pronounced **hypoxia of altitudes**, for want of oxygen, **reach the plains**, wherein from the houses, **emanating obnoxious odors of aborted blood**, contraceptive menstrual blood makes them irritated, **crazy and they drive humans**, break their homes.

e) live humans annual excreta of 5 people can drive a bus for 350 KM., can supply electricity to township; its bio-methane, eco friendly, it's not toxic to the environment; its reacted at different stratospheres, becomes manure for plants.

Whereas **innumerable dead fetuses putrefaction**, result in **toxic, inflammable, explosive gases** emanation, for e.g. ammonia, hydrogen disulphide, which collect in the coastal, river beds, septic tanks, soil, resulting in **rupture, explosion of earth** as it happened during tsunami of Japan; these **gases** add to convection currents to increase **tornadoes, hail storms**.

Due to these toxic fumes recently septic tank cleaners, well diggers, miners are facing lethal effects. These **toxic fumes mixing in waters will result in more and more of water living, washed ashore dead**.

When lightning passes through these toxic fumes, it leads on to **spontaneous combustion of skies**, lighting up **spontaneous forest fire, oil tanker vessel fire**.

The soil **with putrefaction of innumerable dead fetuses leads to production of bees, wasps, and stinging insects**.

**Self sustaining ecology meant to support and supported by life is disrupted by abortion, contraception, wherein life goes down the drain**

f)Everything on earth is designed to meet the need of a human being, baby, child; without live humans, all the technologies, developments, have become futile, without utilizers, customers, buyers, passengers- recession; we invest on

people to see returns, but the people we have eradicated, hence invested money returns we are not able to see and every business –big or small is in ruins, **hard hit recession, achieved by acquired contraception, abortion, disrupting the existing self sustaining economy designed by the Author of the Universe to meet the needs of people.**

**Baby boom is the answer to recession, climate change, to prevent young parents from embracing early death, disappearance of islands, fish, birds, tsunamis, frequent visit of tigers, elephants to human habitat**

**Plan of action:**

1] Forming the **infra structure** comprising of Grass root level workers

2] Providing **information** of the

- a) **increasing degenerative, neoplastic, auto immune, infectious diseases, mortality, climate change, recession, disappearance of islands, fish, birds, global warming, global hypoxia, caused by contraception, abortion**
- b) **Contraception reversal, halt of abortions, reverts destruction of germ cells, with restoration of androgen, estrogen to 80% of age normal, resulting in 80% decline in diseases, mortality, by restored cell metabolism, cell cycle, genomic repertoire**
- c) the robust health of cells metabolism, cell cycle provided **by essential fatty acids** containing diet, **[converted to cholesterol]** namely **consumption of virgin oil**-coconut oil, palmolein oil, gingili oil ground nut oil, olive oil [highest fertility index is olive oil]with their **life supporting factors** contained, **nuts and seeds preparations, with life supporting factors** meant to support the growth of a baby plant, **one egg / day as fried preparation with its life factors** to support the life of a chick
- d) **milk, dairy products**, including butter, ghee are required for cells of brain, other tissues,- **good fatty acids, fish identified by scales, gills contain omega 3, 6 fatty acids is also essential fatty acids** good for skin, joints, vision, heart. esse
- e) To differentiate from **animal fat consumption [triglyceride]** which is harmful to produce 6 fold myocardial infarction, stroke; **hence meat without fat, blood washed away to be consumed**
- f) **Not to consume the water living without scales, gills e.g. crabs, prawns, sword fish, jelly fish..-[obnoxious triglycerides] since they contain toxin in their flesh[akin to snakes, scorpions] which by molecular mimicry, mediate auto immune destruction leading to vasculitis, carditis, thyroiditis, gastro enteritis, appendicitis, cholecystitis, pancreatitis, cerebro vasculitis, microangiopathic hemolysis, thrombocytopenia, pancytopenia, nephritis, angio neurotic edema, transverse myelopathy, alopecia, polyradiculopathy, gastro intestinal tract, pancreatic, liver malignancies**

- g) **Tight pelvic attires produce thermogenic destruction of germ cells resulting in germ cell neoplasm**, loss of viability of germ cells, hence to wear formal dresses with loose fitting around pelvis, since the cells are extremely fragile
- h) To **observe abstinence for 7 days** after last menstrual onset, **for 45 days abstinence in male child birth, for 90 days abstinence in girl child birth, to avoid auto immune diseases, adenomyosis, sudden demise, disseminated intravascular coagulation**
- i) **More the number of children the parents are blessed with after holy matrimony[the marriage bed is undefiled]the longer their lives** with robust health because the fetal placental estrogen-4200pg/ml enhances cell metabolism
- j) To discourage all forms of adultery, pornography, homosexuals, extramarital, premarital affairs, which result in self destruction
- k) **To promote child birth at all costs, this is the basis for self sustaining ecology, economy, longevity of life, preventing metabolic syndrome...**
- l) **Hysterectomy, orchidectomy are associated with 500% increased degenerative, infectious, neoplastic diseases since the hormones drop to 0.4pg;** let the hysterectomy, be reserved for post partum hemorrhage, and cancer uterus; orchidectomy be reserved for testicular cancer only;
- m) **let Myomectomy coupled with tubal recanalization [contraception reversal]replace hysterectomy for uterine bleeding by myoma in a contracepted host;** Myomectomy will stop uterine bleeding, contraception reversal, essential fatty acids intake, will prevent recurrence of myoma
- n) **tubal recanalization coupled with pelvic floor repair, sling procedure or ring pessary, Kiegel's exercise [contraception reversal] replace vaginal hysterectomy,** for uterine descent **in a contracepted host;** pelvic floor muscles will restrengthen by restored cell metabolism, cell repair, rejuvenation of pelvic floor muscles, secondary to contraception reversal, restoring germ cells from destruction, restoration of androgen, estrogen to 80% of age normal.
- o) **Child birth-2months maternity leave sufficient-it's a physiological status, not pathology**

3] **Implementation** of the following by Grass root level workers system

- a) **Contraception reversal in countries with permanent sterilization namely fallopian tubal recanalization, vasectomy reversal, contraceptive implants removal, by tripod scheme of donor agency, service agency and the beneficiary**
- b) **Promote child birth at all costs**
- c) Provide maternity services for safe deliveries
- d) Provide antenatal surveillance to **pregnancy after caesarian sections, to follow up patients weekly, after 7 months of gestation**



### Strategy:

**Form the grass root level workers infrastructure** comprising of village health volunteer for every 5000 people, village health nurse, rural community organizers, social worker, for every 25000 people, mobile team comprising of nurses, medical officer, helpers for every 1.25 lakh population, tertiary care including a surgeon, gynecologist, theatre for every 5-6 lakh people. This frame work comprises **one life sector cell**, to restore life among 6 lakh people by targets achievement. Implementation assessor will be coordinating 5 life sector cells.

Village health volunteer can be a dhai, an elderly lady who'll be chosen by the community, who can be given training on information on our targets, the prime being promote child birth, care at all costs, to coordinate with the rural community organizers, village health nurse and the mobile team.

Rural community organizers will be youth coordinating for 5 village health workers areas, [25,000people] along with the village health nurse, towards achieving the targets.

Mobile team will be giving antenatal surveillance for 5 areas served by rural community organizers, [125,000 people] to cover pregnancy after LSCS from 7<sup>th</sup> month weekly follow up, maternity child care services to eradicate abortion, contraception, to promote child birth, child care the future generation, to eradicate pornography, adultery, to give awareness about blessed child birth after Holy matrimony to prevent early demise of young parents, increasing natural disasters, recession.

Surgeons, gynecologists will be coordinating 5 mobile teams, [5-6 lakh people] concentrating on contraception reversal including tubal recanalization, removal of contraceptive implants, removal of loop, copper t, to replace hysterectomy by Myomectomy coupled with tubal recanalization; pelvic floor repair/sling procedure, coupled with tubal recanalization instead of vaginal hysterectomy, because hysterectomy is associated with 500% increase in diseases because the estrogen, decreases to 0.4pg and associated decline in cell metabolism, leading to degenerative diseases and neoplasm. Tertiary care units will be diligently performing their other services also.

*Implementation assessor, a senior officer, will be supervising implementation, tracking the cost allotment, distribution, utilization of funds, their reports, achievement assessment, base line survey, assessment annual survey of promoted child birth, contraception reversal, decline in diseases, mortality, disasters, divorces, economy recession, disappearance of fish, birds, abolition of pornography, adultery, pre marital, extra marital affairs, increase in holy matrimony, strengthened families, Myomectomy, pelvic floor repair surgeries, instead of hysterectomy; assessment annual survey, of thwarted orchidectomy, hysterectomy and the prevented, declined diseases*

*Any governmental, non governmental agencies, people interested in society's welfare, can appraise themselves of this need and can take initiative to form one life sector cell, frame projects for submission, approval, implementation and follow up by meticulous assessment surveys.*

Ultimately global life sectors, organizations, assemblies, [WHO/UNO] will have to feel the need of the targets, purpose portrayed in this proposal and take global initiative to reverse contraception, abortion, promote child birth at all costs the basis for life, to achieve reversal of recession, climate change, decline

in diseases, mortality, therapy failures in couples practicing contraception, abortion, disappearance of fish, birds, islands, global warming, hypoxia.

Global sectors like USAID, WHO, UNO, Bill gates foundation can appropriate this scheme with urgency for nations, global benefit, and enable tripod scheme of donor agency, service agency, beneficiary[ who gets it free of cost] to be adopted.

### Provide the information of targets

- by training to village health worker, village health nurse, rural community organizers, medical, paramedical personnel, mobile team;
- Surgeons, gynecologists, medical officers will be conducting the training program, who'll be briefed about targets, altered health-life care approach with awareness of the forgotten cell, the implementation protocol.
- Information is imparted to the people by 1] *grass root level workers, by visual aids, media,* 2] *training of different sectors* e.g. health sectors, police officers, pharmaceuticals, engineers, executives, students, self employed, youth, local ladies assemblies, good will organizations, governmental agencies, nongovernmental agencies. 3] *Change in curriculum of school, college, medical, paramedical* reflecting on the basics to include the facts presented in the publications backing the project, highlighting the targets of this project to eradicate, reverse contraception, abolish abortions

### Implementation of the program by surveillance:

- Promote child birth at all costs achieving growth of people in billions- by safe delivery, meticulous antenatal surveillance specially for pregnancy after lower segment caesarian sections, every week after 7 months of pregnancy [11 LSCS was performed on a mother safely in 1989, no therapeutic indication for sterilization, antenatal surveillance programmed to provide follow up every week, after 7 months of pregnancy following lower caesarian segment sections].
- Promote child care anticipating, targeting in billions.
- Eradicate one child policy, small family norms, contraception, abortions from the face of this earth**
- Reverse contraception-temporary and permanent specially by tubal recanalization, implemented by tripod scheme of beneficiary, donor agency, service agency, with global funding, planning implementation in countries wherein permanent surgical sterilization techniques have been adopted
- Prohibit pornography, adultery,[websites] pre marital, extra marital affairs, homosexuals**
- Encourage holy matrimony based family norms, strengthened by uncurbed, God ordained child birth-the basis of life-the privilege, birth right of parents
- Promote the awareness of **More the children, longer the life of parents, the goodness provided to parent's cell metabolism, by fetal placental estrogen**, male child birth increases parents` life by ~10 years, [x y] (smaller placenta, smaller raw surface, requiring 45 days abstinence), girl

child birth[xx] (larger placenta, larger placental detached raw surface, 90 days abstinence)

**h) Save womanhood from napkin status of use and throw [use and abort] and raise womanhood to the royal, blessed motherhood of bringing forth many children as God ordained, for her beloved husband, after holy matrimony; to covet precious virginity**

**Procedures:** Let the *tubal recanalization* be by *open mini laparotomy* -supra pubic incision-than by laparoscopy, *because after tubectomy*, secondary to germ cells destruction, reduced endogenous estrogen, deranged cell metabolism, degenerative changes in every tissue enhances, including peritoneum; *there will be dense adhesions incorporating tubes, sigmoid colon, omentum, caecum, urinary bladder prolonging laparoscopic recanalization to hours, whereas open laparotomy, tubal recanalization can be finished as follows in 10 minutes-each side*

Let both the severed ends of fallopian tube be cut open, to check the lumen, patency, prolene thread be passed through the fimbrial end, through the severed ends, corneal end to check patency; approximate the severed ends, over the prolene thread and 2 bites of suture taken between the approximated severed ends with 6-7 0` catgut, then remove the prolene thread; repeat the same on the other side also. As the germ cells destruction stops by tubal recanalization, androgen, and endogenous estrogen are restored to 80% of age normal, resulting in restored cell metabolism, leading to spontaneous adhesionolysis.

**Adhesion release, grilling the lumen is not required, to minimize tissue injury, bowel perforation, to reduce complications, prolonged anesthesia.** We have seen the cell cycle recovering including new nail bed, hair follicles, every tissue is restored its robust health-80% by the restored hormones. Myoma have increased in incidence, after contraception, due to estrogen decrease, secondary to contraception, Myoma will never become malignant, when its associated with menorrhagia, **Myomectomy, with tubal recanalization can replace hysterectomy to treat myoma associated menorrhagia.**

Similarly **pelvic floor repair, sling procedure**, with tubal recanalization, **replace vaginal hysterectomy**, because due to contraception, deranged cell metabolism, enhanced degenerative phenomenon in the tissues, the pelvic floor muscle degenerates, leading to uterine descent; tubal recanalization will restore hormones, because germ cells destruction stops, thereby pelvic floor muscles will be renewed, strengthened, added by sling procedure, or Kiegel's exercise or a ring pessary to keep back the uterus; hysterectomy can be reserved for cancer uteri, post partum hemorrhage alone. Hysterectomy is associated with 500% degenerative diseases, neoplasm secondary to reduced synthesis of endogenous estrogen to 0.4pg/ml

**Similarly reserve orchidectomy for testicular cancers** only; prostate pathology stems from slow physiological decline in androgen, with periurethral growth preferentially going for benign prostatic hyperplasia; contraception, abortion with reduced agonizingly androgen, to very low levels, leads to more of malignant changes in prostate, orchidectomy will increase prostate neoplasm, since androgen will reduce drastically, leading to 500% increased diseases

**Surveys:** *Base line survey, annual survey, end of program survey* of all the people, families, to include the number practicing contraception, abortion, status of hysterectomy, orchidectomy, children per family, diseases prevalent matching against their contraception status; as the project is implemented then, the reverted figures of contraception, abortion, promoted child birth specially more than small family norms, the luxurious achievement of child birth, antenatal surveillance achieved specially for pregnancy after LSCS, thwarted hysterectomy, orchidectomy, and performed Myomectomy with tubal recanalization, pelvic floor repair, with tubal recanalization, instead of hysterectomy; *recession level assessment, natural disasters decline assessment.*

**Questionnaire, Visual Aids, posters- see annexure**

**Life sector cell:**

**Budget:**

**Capital Budget** for co coordinators who are interested in the program but do not have adequate infrastructure

Theatre Table Rs. 25,000 or as per local quotation

Focus lamp Rs.10, 000 or as per local quotation

Instruments to perform tubal recanalization, Myomectomy, pelvic floor repair Rs. 10,000 or as per local quotation

**Recurring budget**

Village Health volunteer- (VHV)  
Rs. 1000/month

Rural community organizer (RCO)/village health nurse (VHN)/social worker (SW)/village health worker (VHW)-  
Rs.10, 000/month

Helper mobile team Rs. 3000/month

Staff nurse –mobile team Rs. 12500/month

Medical Officer Rs. 33,000/month

Survey analyst Rs. 25,000/month

Physiotherapist Rs. 15,000/month

Coordinator Rs. 28,000/month

Surgeon/ gynecologist/Physician/anesthetist coordinating Rs. 50,000/month

Implementation assessor Rs. 60, 000/month + transport cost

Recanalization procedure Rs.17000/procedure to the service team, Rs. 3000[-to the patient [as food, health fortifier-horlicks-5 bottles, virgin coconut oil-5l can, transport-500]

Every child birth delivery-Rs. 6500-to the service team, Rs. 1000 worth horlicks, coconut oil can to the mother], child birth promoted >2 7500/ delivery to the service team

Child birth by LSCS-Rs.6500/to the service team, [Rs.1000 to the mother as horlicks, protinex, food fortifier, virgin coconut oil, transport]

Antenatal surveillance services per mother Rs. 300/ month to the service team; towards medicine Rs. 200/ month /mother to the service team, food fortifier- horlicks, virgin groundnut oil, coconut oil, palmolein oil-200/month to the mother

Every copper t removed, every parent motivated to avoid contraception, abortion-Rs.1000/couple

Every child birth promoted –incentives to VHV/helper-Rs.200/child, RCO/VHN/SW-Rs.400/child, Nurse-Rs.300/child, medical officer-Rs.500/child, gynecologist/, surgeon/-Rs.1000/child

***Child birth-2months maternity leave sufficient-it's a physiological status, not pathology***

Child care Rs. 300/ month/ baby as food products till 5 years, Rs. 100/ month for medicines/baby to the service team

***Save the uterus:***

Myomectomy-Rs.13, 000/procedure

Sling procedureRs.13000/procedure

Ring pessary, Kiegel's exercise-Rs. 1000/ mother to physiotherapist, medical team, supervision-Rs. 1000/ mother for food products

Every hysterectomy thwarted, replaced by Myomectomy, pelvic floor repair Rs. 5000/ person to the surgeon, gynecologist

**Funds sources:** USAID, WHO, UNO, UNICEF, UNDP, world bank, world vision, CASA, Bill gates foundation,

**Sample questionnaire**

Individual,

Name, Age, Sex, Married, Children, Contraception status, Diseases, Death, Disaster, Economy

**For family**

No. of members, Age group, children, diseases, death, disasters, economy,

Base line survey analysis -4 age groups- 20-35years, 35-50 years, 50-70years, >70years

Children, contraception status, diseases, death, disasters, economy, employment

Annual, End of program analysis for families-4 age groups-20-35 years, 35-50years, 50-70years, >70 years

Children, child birth promoted, Contraception status-reversed/not reversed, diseases, death, disasters, economy, employment

Goodwill global organizations,...implementing the tripod scheme of donor agency, service sector, beneficiary for whom everything gets free of cost.

***Program planned for 3.5 years*** to revert life in the cells, to prevent further disappearance of fish, islands, birds; to prevent increasing trends of storms, cyclones, tornadoes, hail storms, tsunamis, earth quakes, climate change; to revert recession; to prevent early demise of young parents, to minimize hysterectomy, orchidectomy; restore robust health in the cells to revert metabolic syndrome.

AUTHORS

**First Author – Dr. Elizabeth JS**