

Use of Quarry Dust to Replace Sand in Concrete – An Experimental Study

G.Balamurugan*, Dr.P.Perumal**

* Associate Professor and Head, Department of Civil Engineering, Jayamatha Engineering College, Aralvoimozhi.

** Principal, Mahendra Institute of Engineering and Technology, Mallasamudram, Namakkal

Abstract- This experimental study presents the variation in the strength of concrete when replacing sand by quarry dust from 0% to 100% in steps of 10%. M20 and M25 grades of concrete were taken for study keeping a constant slump of 60mm. The compressive strength of concrete cubes at the age of 7 and 28 days were obtained at room temperature. Also the temperature effect on concrete cubes at 100°C on 28th day of casting was carried out to check the loss of strength. From test results it was found that the maximum compressive strength is obtained only at 50% replacement at room temperature and net strength after loss due to hike in temperature was above the recommended strength value due to 50% replacement itself. This result gives a clear picture that quarry dust can be utilized in concrete mixtures as a good substitute for natural river sand giving higher strength at 50% replacement.

Index Terms- Concrete, quarry dust, river sand, compressive strength.

I. INTRODUCTION

Concrete is the most widely used composite material today. The constituents of concrete are coarse aggregate, fine aggregate, binding material and water. Rapid increase in construction activities leads to acute shortage of conventional construction materials. It is conventional that sand is being used as fine aggregate in concrete. For the past two years, the escalation in cost of sand due to administrative restrictions in India, demands comparatively greater cost at around two to three times the cost for crusher waste even in places where river sand is available nearby.

The function of the fine aggregate is to assist in producing workability and uniformity in the mixture. The river deposits are the most common source of fine aggregate. Now-a-days the natural river sand has become scarce and very costly. Hence we are forced to think of alternative materials. The Quarry dust may be used in the place of river sand fully or partly.

A comparatively good strength is expected when sand is replaced partially or fully with or without concrete admixtures.

It is proposed to study the possibility of replacing sand with locally available crusher waste without sacrificing the strength and workability of concrete.

II. CONCRETE MATERIALS AND THEIR PROPERTIES

Coarse aggregate of 20mm maximum size is used in Reinforced cement concrete work of all types of structures. This is obtained by crushing the stone boulders of size 100 to 150mm in the stone crushers. Then it is sieved and the particles passing through 20 mm and retained on 10mm sieve known as course aggregate. The particles passing through 4.75mm sieve are called as quarry dust. The quarry dust is used to sprinkle over the newly laid bituminous road as filler between the bitumen and coarse aggregate and manufacturing of hollow blocks. Various physical properties of the concrete materials are tabulated in Table 1.

Table 1: *Properties of the materials*

Material	Properties
Crushed granite stone	Maximum size : 20 mm Specific gravity : 2.98 Fineness modulus : 6.36 Density : 1.58gm/cc
River sand	Specific gravity : 2.53 Fineness modulus : 3.08 Density : 1.63gm/cc Void ratio : 0.55
Quarry dust	Specific gravity : 2.57 Fineness modulus : 2.41 Density : 1.85gm/cc Void ratio : 0.42
Ordinary Portland cement	Specific gravity : 3.05 Initial setting time : 30 min. Final setting time : 220 min Fineness : 8 % residue on IS 90 micron sieve
Water	P _H : 7 Density : 1gm/cc

III. EXPERIMENTAL INVESTIGATION

A. Mix proportioning

Two grades of concrete M20 and M25 having nominal mix proportion of 1:1.5:3 and 1:1:2 respectively were used by weight and w/c ratio was fixed according to the slump requirement of 60mm. For this concrete mix, quarry dust was added for replacement of sand from 0% to 100% in step of 10%.

B. Casting of specimen

Mould of size 150 x 150 x 150 mm was used to cast specimens for compression test. Aggregate of size less than 20 mm and greater than 12.5 mm were used. The specimens were cast, tested at the age of 7 and 28 days after curing.

IV. TESTING PROCEDURE

A. Fresh concrete workability

To determine consistency of concrete, Slump test was conducted with varying water content and a particular water cement ratio (w/c) which gives the slump of 60mm was selected from graph. The various w/c for different proportions of sand and quarry dust was presented in Table 2.

Table 2: Workability of concrete (slump 60mm)

Fine aggregate Sand: Quarry dust	water cement ratio (w/c)	
	M20	M25
100:0	0.420	0.382
90:10	0.435	0.387
80:20	0.450	0.392
70:30	0.460	0.397
60:40	0.480	0.400
50:50	0.490	0.404
40:60	0.500	0.408
30:70	0.510	0.412
20:80	0.525	0.415
10:90	0.530	0.419
0:100	0.540	0.425

B. Compression test

The cube specimens were tested for compressive strength at the end of 7 days and 28 days. The specimens were tested after surface of the specimen dried. The load was applied on the smooth sides without shock and increased continuously until the failure of the specimen. The maximum load withstand by the specimens is noted, mean compressive strength is determined and presented in Table 3.

Table 3: Mean Compressive strength of concrete (in MPa)

Fine aggregate Sand: Quarry dust	M20		M25	
	7 days	28 days	7 days	28 days
100:0	19.25	22.22	23.21	31.03
90:10	19.67	22.67	23.54	31.19
80:20	20.35	24.00	23.97	31.52
70:30	20.89	25.33	24.12	31.75
60:40	21.33	25.77	24.29	32.54
50:50	22.67	27.56	24.59	32.92
40:60	20.44	26.22	23.60	31.33
30:70	19.25	23.56	23.37	30.87
20:80	18.15	22.22	20.58	30.24
10:90	17.70	20.89	20.35	29.33
0:100	15.85	20.44	19.67	28.33

C. Temperature effect on concrete

Due to increase in temperature the strength of concrete was affected. To find the loss in strength the concrete cubes were kept at 100°C at an age of 28 days for 24 hrs in an oven and then tested in CTM. The strength obtained is presented in Table 4.

Table 4: Mean Compressive strength of concrete at 100°C

Fine aggregate Sand: Quarry dust	28 days Compressive strength (in MPa)	
	M20	M25
100:0	17.63	24.37
90:10	18.29	24.50
80:20	18.52	25.15
70:30	18.59	25.39
60:40	19.11	25.41
50:50	20.74	26.75
40:60	19.85	26.30
30:70	19.48	25.15
20:80	19.33	23.87
10:90	17.77	22.77
0:100	16.96	19.90

Due to sudden cooling (thermo shock) the strength of concrete was affected. To find the loss in strength the concrete cubes were kept at 100°C at an age of 28 days for 24 hrs in an oven and then immersed in water for few minutes and then tested in CTM. The strength obtained is presented in Table 5.

Table 5: Mean Compressive strength of concrete due to thermo shock

Fine aggregate Sand: Quarry dust	28 days Compressive strength (in MPa)	
	M20	M25
100:0	16.96	22.22
90:10	17.50	22.67
80:20	17.63	23.56
70:30	17.77	24.00
60:40	18.29	24.37
50:50	19.33	26.00
40:60	18.60	25.33
30:70	18.52	24.00
20:80	18.29	22.22
10:90	17.50	21.33
0:100	16.00	18.29

V. ANALYSIS OF TEST RESULTS

A. Compressive strength

From the Table 3, it is observed that both the 7 days and 28 days compressive strength is increased for the 50% replacement of sand at considerable level. The variation in compressive strength is represented in Figure 5.1 and 5.2.

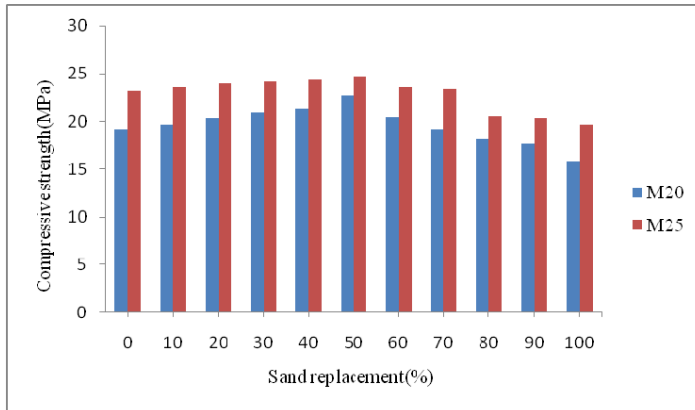


Figure : 5.1 Compressive strength of concrete in 7 days

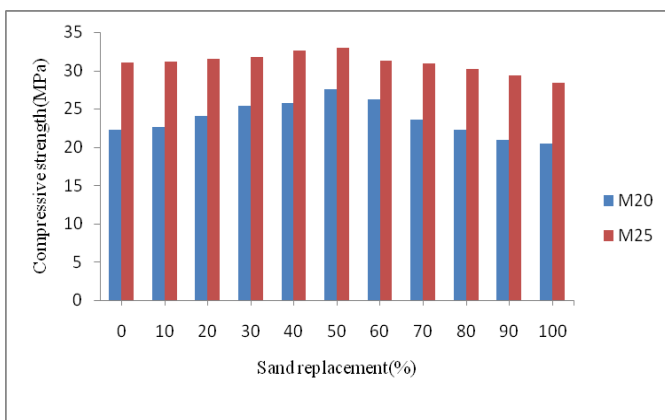


Figure : 5.2 Compressive strength of concrete in 28 days

Due to increase in temperature the strength of concrete was affected. The reduction in strength due to increase in temperature is presented in Table 5.1 and 5.2. From those Tables, it is observed that the percentage of reduction in strength compared with control concrete is very less in 50% sand replacement.

Table 5.1: Compressive strength of M20 concrete in 28 Days due to temperature effect

Fine aggregate Sand: Quarry dust	Compressive strength (MPa)		% of reduction in strength compared with control concrete
	Normal temperature	After heated to 100°C	
100:0	22.22	17.63	20.66
90:10	22.67	18.29	17.69
80:20	24.00	18.52	16.66
70:30	25.33	18.59	16.34
60:40	25.77	19.11	14.00
50:50	27.56	20.74	6.67
40:60	26.22	19.85	10.67
30:70	23.56	19.48	12.34
20:80	22.22	19.33	13.01
10:90	20.89	17.77	20.03
0:100	20.44	16.96	23.68

Table 5.2: Compressive strength of M25 concrete in 28 days due to temperature effect

Fine aggregate Sand: Quarry dust	Compressive strength (MPa)		% of reduction in strength compared with control concrete
	Normal temperature	After heated to 100°C	
100:0	31.03	24.37	21.47
90:10	31.19	24.50	21.05
80:20	31.52	25.15	18.95
70:30	31.75	25.39	18.18
60:40	32.54	25.41	18.12
50:50	32.92	26.75	13.80
40:60	31.33	26.30	15.25
30:70	30.87	25.15	18.95
20:80	30.24	23.87	23.08
10:90	29.33	22.77	26.62
0:100	28.33	19.90	35.87

Due to sudden cooling (thermo shock) the strength of concrete was affected. The reduction in strength due to thermoshock is presented in Table 5.3 and 5.4. From those Tables, it is observed that the percentage of reduction in strength compared with control concrete is very less in 50% sand replacement.

Table 5.3: Compressive strength of M20 concrete in 28 days due to thermoshock

Fine aggregate Sand: Quarry dust	Compressive strength (MPa)		% of reduction in strength compared with control concrete
	Normal temperature	After thermoshock	
100:0	22.22	16.96	23.68
90:10	22.67	17.50	21.25
80:20	24.00	17.63	20.66
70:30	25.33	17.77	20.03
60:40	25.77	18.29	17.69
50:50	27.56	19.33	13.01
40:60	26.22	18.60	16.30
30:70	23.56	18.52	16.66
20:80	22.22	18.29	17.69
10:90	20.89	17.50	21.25
0:100	20.44	16.00	28.00

Figures 5.3 and 5.4 represent the temperature effect on compressive strength of concrete. From the figures it is clear that if the concrete was exposed to high temperature and subjected to sudden cooling then the loss in compressive strength is more than loss due to temperature effect when compared with strength of concrete at normal temperature.

Table 5.4: Compressive strength of M25 concrete in 28 days due to thermoshock

Fine aggregate Sand: Quarry dust	Compressive strength (MPa)		% of reduction in strength compared with control concrete
	Normal temperature	After thermoshock	
100:0	31.03	22.22	28.40
90:10	31.19	22.67	26.95
80:20	31.52	23.56	24.08
70:30	31.75	24.00	22.66
60:40	32.54	24.37	21.47
50:50	32.92	26.00	16.22
40:60	31.33	25.33	18.37
30:70	30.87	24.00	22.66
20:80	30.24	22.22	28.40
10:90	29.33	21.33	31.27
0:100	28.33	18.29	41.06

VI. CONCLUSION

Based on above discussions, following conclusions are drawn;

- Concrete acquires maximum increase in compressive strength at 50% sand replacement. The percentage of increase in strength with respect to control concrete is 24.04 & 6.10 in M20 and M25 respectively.
- After heated to 100°C, the maximum compressive strength is obtained at 50% sand replacement. The percentage of reduction in strength with respect to control concrete is 6.67 & 13.80 in M20 and M25 respectively.
- Due to thermo shock also the compressive strength is maximum at 50% sand replacement only. The percentage of reduction in strength with respect to control concrete is 13.01 & 16.22 in M20 and M25 respectively.

The above conclusion gives clear picture that quarry dust can be utilized in concrete mixtures as a good substitute for natural river sand with higher strength at 50% replacement.

REFERENCES

- [1] M.S. Shetty, *Concrete Technology Theory and Practice*, 5th edition, S.Chand & Co. Ltd., New Delhi
- [2] I.R.Mithanthaya, Jayaprakash Narayan, *Replacement of Sand by Quarry Dust for Plastering and in the Pavement Design*, Proceedings of national Symposium at Karunya Institute of Technology on 20-21, December 2002, pp 9-15.
- [3] B.P.Hudson, *Manufactured sand for concrete*, The Indian Concrete Journal, May 1997, pp237-240.
- [4] M.S.Jaafar, W.A.Thanoon, M.R.A.Kadir and D.N.Trikha, *Strength and Durability characteristics of high strength autoclaved stone dust concrete*, The Indian concrete journal, December 2002, pp771-774.
- [5] A.K.Sahu, Sunil kumar and A.K.Sachan, *Crushed stone waste as fine aggregate for concrete*, The Indian Concrete Journal, January 2003 pp845-847.
- [6] IS456-2000 *Indian standard code of practice for plain and reinforced concrete*, Bureau of Indian standards, NewDelhi.
- [7] Md.Safiuddin, S.N.Raman and M.F.M. Zain, *Utilization of Quarry waste fine Aggregate in concrete mixures*, 2007 Journal of Applied sciences research 3(3) : 202-208.

AUTHORS

First Author – G.Balamurugan, B.E., M.E.(Struct.), Associate Professor and Head, Department of Civil Engineering, Jayamatha Engineering College, Aralvoimozhi. Email: gbalamuruganjec@gmail.com
Second Author – Dr.P.Perumal, B.E., M.E.(Struct.), Ph.D, F.I.E.,M.I.S.T.E, Principal, Mahendra Institute of Engineering and Technology, Mallasamudram, Namakkal,

Correspondence Author – G.Balamurugan, Email: gbalamuruganjec@gmail.com, Phone : 09943025303

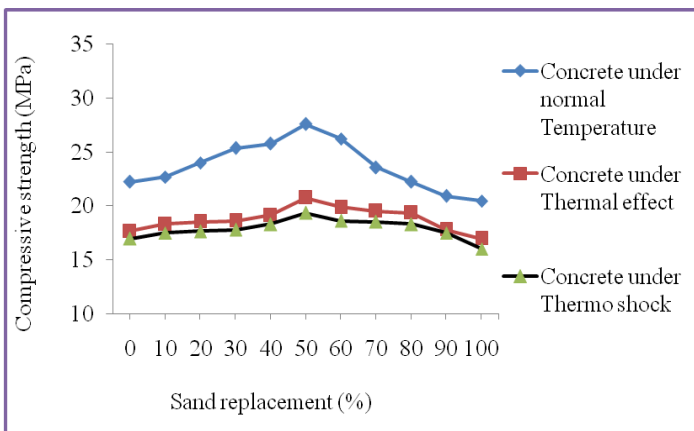


Figure 5.3: Temperature effect on compressive strength of M20 concrete

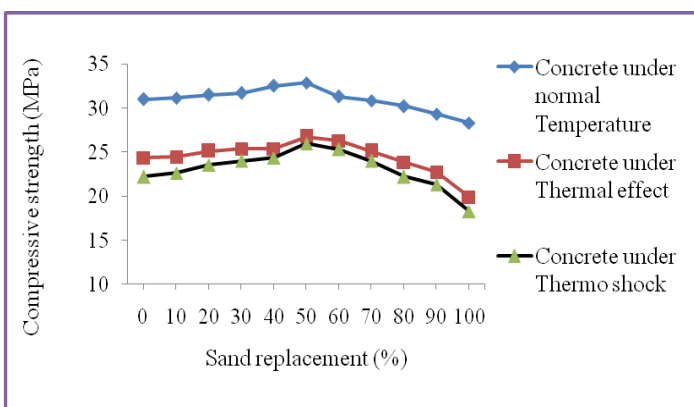


Figure 5.4: Temperature effect on compressive strength of M25 concrete